

Birdsong Nature Center

November - December 2015

CALENDAR OF EVENTS

November

Thurs	Nov. 5	Butterfly Garden Work Day
Sat.	Nov. 7	Member Social and Annual Meeting
Wed.	Nov. 11	Veterans Day - OPEN
Sat.	Nov. 21	Late Fall Morning Trail Ride
Sat.	Nov. 28	Thanksgiving Saturday Super Walk

December

Thurs.	Dec. 3	Butterfly Garden Work Day
Sat.	Dec. 5	Take a Child Outside for the Holidays
Sat.	Dec. 12	Winter Sunset Trail Ride
Wed.	Dec. 23	Birdsong will be closed from December 22 Through January 5.

January

Wed.	Jan. 5	Center reopens
------	--------	-----------------------



BIRDSONG NATURE CENTER

WEB SITE: www.birdsongnaturecenter.org

EMAIL: birdsong@birdsongnaturecenter.org

TWITTER: @BirdsongNatureC

FACEBOOK: Birdsong Nature Center

YOUTUBE: Birdsong Nature Center



BIRD WINDOW AND TRAIL HOURS

Wednesday	9 AM - 5 PM
Friday	9 AM - 5 PM
Saturday	9 AM - 5 PM
Sunday	1 PM - 5 PM

Bird Window and Nature Trails

Welcome to Birdsong! Enjoy the beauty and serenity of the Bird Window and learn to identify resident and visiting birds up close. Walk the Nature Trails to observe wildlife in a variety of habitats and enjoy the sounds of nature at the Listening Place. Before you leave, you may want to visit the Chickadee Corner Gift Shop. We hope you enjoy your stay!

All visitors please sign in at the Registration Center. Trail maps are provided. Pets, trash and fires are not permitted.

Registration

Please register for all programs by calling or emailing: (229) 377-4408, 1 (800) 953-BIRD, Birdsong Office
Fax line (229)-377-8723, or birdsong@birdsongnaturecenter.org

Dear Friends,

We wanted to take this opportunity to say a very sincere “thank you!” to all of our very generous donors and supporters for making the House and Garden Improvements Campaign such an inspiring success. Birdsong has gratefully received gifts from 89 donors, reaching our \$25,000 goal and paying for the entire house and garden restoration project! We appreciate your amazing support so very much! The house repainting and restoration has been completed and the place looks beautiful. We hope that you will come to Birdsong soon to see and enjoy the wonderful results. The garden improvements are also making a remarkable difference – work there is progressing and will continue through the fall. Projects still in the queue are repainting the office building and improving the driveway/parking area. We may need some restorative work on the brick patio on the front of the house, something we had not anticipated, and we are researching the best solution.

We could not be more thrilled or gratified by the generous outpouring of support from our kind donors who made this major project such a powerful success. We can’t say “thank you!” enough.

Birdsong will be celebrating its 30th Anniversary in April 2016 and will be looking fresh and beautiful for the occasion. We plan on hosting a number of events and parties to honor all of our donors, members and volunteers, who so generously support Birdsong throughout the year. We will be contacting you with more information and invitations in the coming months.

Birdsong Nature Center would not be here today but for your generous support. It is the thoughtful, communal and committed efforts by all of you – our members, volunteers, and donors – that keeps Birdsong going, and keeps this very special place preserved and protected for future generations. Please come out soon to enjoy the beautiful nature center that only you make possible. Thank you again for your amazing support all throughout the year, and especially for your very special help with the 2015 House and Garden Improvements Campaign. We look forward to seeing you at Birdsong again soon!

With warmest regards,
Joe Peresich
President, Board of Directors

**Put On Your Calendar!
Old-Timey Plant Sale
Third Saturday in March
March 19, 2016**



HARDSCAPE

Many people think of native plants in the context of wild-flower meadows or woodland gardens, where everything is loose, free, and slightly out of control. But many native plants do very well in a more controlled landscape, like the rudbeckia and oakleaf hydrangea in the garden described here. Plants from this very garden will be for sale at Birdsong's Old-Timey Plant Sale Saturday, March 19, 2016. For photos, see Birdsong's website.

-June White, Plant Sale Chair

HARDSCAPE, by definition, is the non-living or man-made fixtures of a planned outdoor area. Obvious examples are stone walls, brick or concrete patios, and wood decks. However, anything that is not SOFTSCAPE (plants) such as fountains, sculpture, lighting and arbors are also considered hardscape elements.

Ideally, the hardscape installation precedes the planting process as these fences, structures, etc. help shape the overall design, forming a permanent framework for the more ephemeral planting. Every site has its own particular challenges and the solution addressing both functionality and beauty create the atmosphere one desires.

In our particular case, the initial plan included the driveway, front entrance walkway and a large wooden deck with three different access points from the house. Over the course of 36 years, we dramatically enhanced the basic plan while addressing three major issues: drainage, need for lower maintenance and a sloping site. Aesthetically our style is modern and our choice of hardscape materials has continuity both with the house and the entire yard including natural periphery.

Because our lot has a steep drop off at the site of the garage, fill dirt had been brought in to allow for the drive and turn area. The driveway was reinforced with a RR tie retaining wall and highway granite. At one point, a day lily bed was tried but the soil was poor and the bed was not in the sprinkler system. It was replaced with gravel and a metal sculpture, which lessened the amount of weeding and added dramatic impact.

The remainder of this fill dirt slope received a different solution. An aggregate ramp was added for the lawn mower's access to the back yard. On either side of the ramp, shallow steps were built using rusted steel for the risers with loose pea gravel on one side and paved aggregate on the other. Taking advantage of the irregular shape of the slope, the aggregate set of steps flared out in a fan shape with areas for two planting beds.

The larger of the two beds is quadrilateral in shape and is one level down. Rich soil replaced the clay fill and careful thought went into the selection of the plant material. The black-eyed Susan (*rudbeckia fulgida* var. *sullivantii* Goldstrum) was the ideal choice. It is perennial, long lasting (flowers from midsummer to fall), takes full sun, is drought tolerant once established, doesn't need regular feeding and is not troubled by disease or pests. One last bonus is that it does not need dividing regularly. Dig the in the spring of fall when needed and share plants with Birdsong's Old-Timey Plant Sale. In the winter, the dark green foliage provides a sea of green in which our three stainless steel fish "swim".

-Bonnie Spann

THANK YOU, DONORS 2015 HOUSE AND GARDEN IMPROVEMENT CAMPAIGN

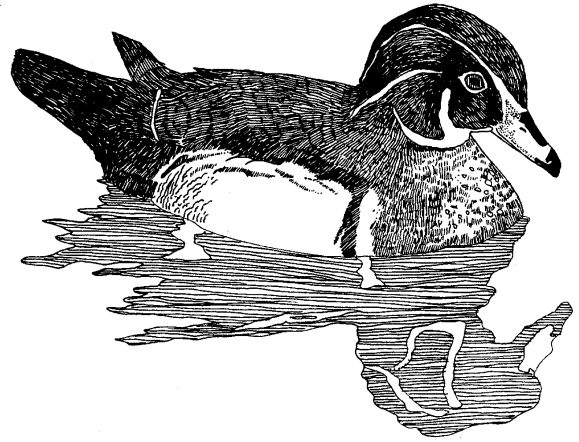
We offer our sincere thanks to the following individuals, businesses, and foundations that contributed so generously to the 2015 House and Garden Improvements Campaign. Thanks to their response, we met and exceeded the campaign goal of \$25,000 and the house has been painted and restored and the gardens improved. We expect that all aspects of the project will be completed by the end of November. We invite our donors to come out and enjoy what their gifts have made possible!

Terry and Patricia Akridge	Lane and Susan Green	Clayton and Berry Penhallegon
Betty and Phil Ashler	Dr. Edward Hall	Joe Peresich
Mark and Susan Baldino	Carolyn Hamilton	William and Pat Prescott
Nancy Barber	Marlene Hanna	Bill Preston
Ramona Bowman	O. Mason Hawkins	Benjamin and Pamela Price
Stanton Beazley	Carolyn Hax	Joan Raley
Nancy Bell	Lynette Joye Hitt	Bruce Ritchie and Sue Ellen Smith
Jan Blue	Tom and Debbie Holt	Fran and Paul Rutkovsky
Becky Bracey	Alice and Gerald Honea	Julia Sawyer
Michael Brezin	Cindy and Joe Johnson	Harry and Meta Scott
Betsey and Tony Brown	Dr. and Mrs. David Jones	Kathleen Reid Scott
Dana Bryan	Laurie Jones	Woody and Sally Search
Jan Collier	Sally and Dean Jue	James and Ellen Shelton
Leon and Laura Lee Corbett	Martha King	Jeanette Shiver
Janis Courson	Mary Krier	Scott and Barbara Sibila
Doug and Dianne Croley	Russ and Gail Kruetzman	Jeanette Sickel
Lynda Davis	David Larbalstier	Simmons, Mills And Simmons
Virginia Densmore	Lassie Lee	Ann Smith
Bill and Lyn Desautel	Donna Legare and Jody Walthall	Bonnie Spann
Dr. William Dickey, Jr	Larry Lesko	Tom Strazulla
Charles and Sissy Dillinger	Ron and Gail McGuire	Carl and Linda Tinsley
Don and Hazel Dixon	Margaret McInnes	Gunilla Trull
Kristine Dougherty	Keith and Becky McNeill	Jerry and Marta Turner
Bob Dunn	Dr Fred and Elizabeth Meneger	Margaret Tyson
Tom, Marie and Family Erickson	Daniel S. Miller	DJ and Gayle Underwood
Betty Esco	Maureen and Monty Monsalvarge	George and Cyndi Watkins
Grayal Farr	Don and Ann Morrow	Jane White
Nathanael Gay	Elizabeth O'Toole	Julene Winbish
The George E. Crouch Foundation		

TAKE A CHILD OUTSIDE
For The Holidays!
Saturday, December 5
9:30-Noon

Bring your favorite child to Birdsong and enjoy a morning in the woods with Sandra Sallee. Give your young person an alternative approach to holiday giving this year and let them collect their own natural materials to make a gift. Each child can take a collecting bag and Sandra will lead us out on a natural treasure hunt to discover what nature has to offer! This is harvest time, with nuts, berries and leaves in profusion. Back at the Barn turn your child's imagination loose to create whatever gift he or she wants, or let them make a small candleholder or surprise gift item with the materials you have collected.

\$5 Friends, \$8 nonmembers, children half-price. Make **RESERVATIONS, PLEASE** by noon on Friday, December 4th, so we know what materials to provide. Call (229)377-4408 or (800)953-2473 or email birdsong@birdsongnaturecenter.org.



LATE FALL MORNING TRAILER RIDE
Saturday, November 21
9:30 – 11:30AM

Join Executive Director Kathleen Brady for a cool weather trail ride. We will make a number of stops to discuss Birdsong's ecology, land management and history, including places such as the Spring Pond, gopher tortoise neighborhood, Big Bay Swamp, Listening Place, Star Pasture, WHIP grant project site and others. We will point out gopher tortoise burrows, look for late fall migrants, signs of wildlife, and any late fall wildflowers in bloom.

RESERVATIONS, PLEASE. Please contact us by noon on Friday, November 20 to reserve a space. Geared for adults and mature children - we may be sitting still and watching birds for an extended period of time. There is room for 15 people on the trailer. Dress for the weather, bring binoculars and bug spray.

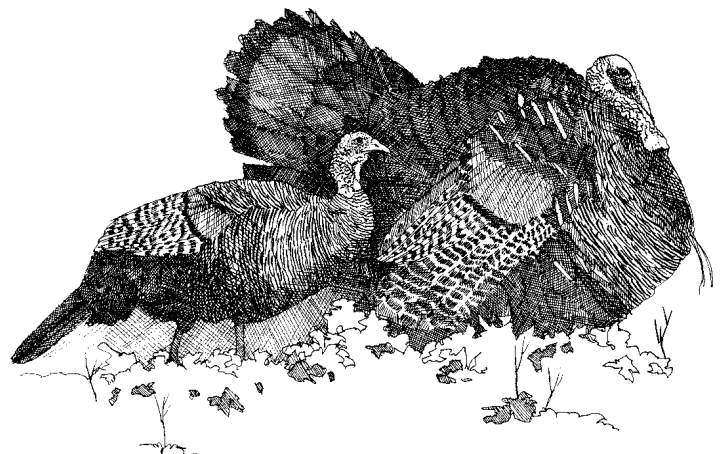
\$6 Friends, \$10 nonmembers, children half-price.

THANKSGIVING SATURDAY SUPER WALK
Saturday, November 28
9:00AM – Noon

Join Birdsong volunteer Beth Grant and retrace the route our late friend mathematician Don Hill developed for a marvelous nature walk he used to lead annually. His description still applies:

“Too much turkey? Got cabin fever? Want your visitors to experience the Red Hills of North Florida/South Georgia? We will leisurely explore several miles of Birdsong's less-traveled trails. Spring Pond, Frog Pond, Big Bay Pond, Big Bay Swamp, Upper Pond and Farm Pond will be waypoints as we experience Birdsong's rich and varied habitats with all they have to offer. Our path will be the loop that maximizes the enclosed area.” Beth Grant has led this walk now for a number of years and has made it her own. You will enjoy her observations and interesting additions to the route!

\$4 Friends, \$8 nonmembers, children half-price.



**Ochlocknee River
HIDDEN GEM PADDLE
Saturday, November 14th**

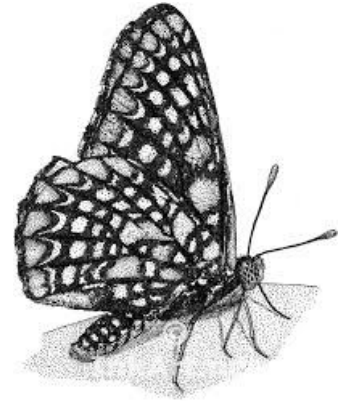
The Georgia River Network is partnering with the Ochlocknee River Water Trail and Golden Triangle Resource, Conservation and Development, Inc. for an exciting one day paddling event and dinner party! Spend a day exploring the tea-stained waters, cypress knees and rich wildlife diversity of the up and coming Water Trail. The event will include lunch and presentations along the route, ranging from flora/fauna, water health and river cleanups, to cultural history and visual and performing arts. There will also be a Post Paddle Party and Dinner with a silent auction.

Birdsong Nature Center is co-sponsoring this event with Keep Grady County Beautiful and the Georgia Department of Natural Resources. We hope you will join this great group of conservationists and paddling enthusiasts for a fantastic and enlightening trip on the Ochlocknee River. The group will gather here at Birdsong for the special Saturday night dinner and camping opportunity. Please see this link and look up the registration page to get your tickets: <http://ochlocknee.eventbrite.com>. If you have questions, please contact Julie Shutters at Golden Triangle RCD at j.shutters@yahoo.com or (229)732-3841.

**WINTER SUNSET TRAIL RIDE
Saturday, December 12 4:00 – 6:00PM**

Bundle up, bring your friends, and let's go for a trail ride at Birdsong and watch the sun set over the Gin House Field. We'll get started in the late afternoon and take the long way round, visiting the Spring Pond, Gopher Tortoise Neighborhood, WHIP/longleaf pine planting site, Big Bay Swamp, Listening Place and end up at the Star Pasture to watch the sun go down. We'll look for any signs of winter wildlife and listen for early evening owl activity. Bring your binoculars and dress for the weather. Geared for adults and mature children; we may be stopping to hold still and listen for extended periods of time. If it is dark enough when we wrap up, we'll look for the emerging stars of early winter constellations.

\$6 Friends, \$10 nonmembers, children half-price.
RESERVATIONS, PLEASE. Call us or email by Friday, December 11 to reserve a space on the trailer.



**BUTTERFLY GARDEN WORK DAYS
Thursdays, November 5 and December 3
9:00 to 11:30AM**

Please join our Butterfly Garden volunteers on the first Thursday of the month to tend our beautiful Butterfly Garden! Bring gardening gloves, knee pads, clippers, and lunch if you wish to stay afterwards. For more information call Donna Legare at (850)386-1148 or Birdsong at (229)377-4408.

**MEMBER SOCIAL AND ANNUAL MEETING OF MEMBERS
Saturday, November 7, 2:00 to 4:00 PM**

All members of Birdsong Nature Center are invited to attend a Member Social on Saturday, November 7th, 2015, from 2pm to 4pm. At 2pm the Annual Meeting of the Members will be convened on the front lawn. The 30-minute meeting will include an introduction of Board members and the annual election. We invite you to stay for a member reception to meet and socialize with other Birdsong members and the Board of Directors, and to enjoy having a look at the newly painted and restored house. Light refreshments will be served.

The main item on the Annual Meeting agenda is the election of the Board of Directors for 2015-2016. The Nominating Committee is pleased to present members up for renomination: President Joe Peresich and Treasurer Bill Preston. Other current members serving are Secretary Margie McInnes, Brenda Coy, Woody Search, Jim Antista, Dale Aldridge, and Jack Weiss. We offer our sincere appreciation for their years of dedication and commitment to Birdsong.

We invite you to meet your Board of Directors and fellow Birdsong members, vote at the corporate meeting, and enjoy a fall afternoon at Birdsong. We hope to see you there!

WILDLIFE MANAGEMENT NOTES

October 13, 2015

I would like to apologize up front if you find this set of wildlife notes to be overloaded with superlatives. It has been an extraordinary couple of months at Birdsong between the weather, the house project, and now our wildflower bloom and migrant invasion, so please forgive any excesses.

Weather We could not ask for any nicer weather than we have had for the last several weeks. It has been dry, and we do need rain, but these beautiful sunny blue-sky days and cool breezes have been delightful. It does get hot in the afternoon, but the memory of those sweltering days in August and September is fading. Nights have been cool, with temperatures down in the 50's recently, so waking up and getting outside to enjoy a cool sunny morning has been refreshing and uplifting, especially since we have so much to see and share at Birdsong.

Wildflowers The fall wildflower display this year is extraordinary, remarkable for the early and extensive presence of *Agalinis*, or false foxglove, a tall plant with a spray-like habit and long stems with deep pink buds and flowers that close late in the day and stay shut until the morning sun warms them up. They pop open around 10am and attract bumblebees, honeybees, and all kinds of other insects. *Agalinis* is the host plant for the buckeye butterfly whose spiny dark caterpillars can be seen feeding on the needle-like leaves, so it is a good year for buckeyes. For the last couple of weeks, foxglove was the star of the show, but now all the gold and purple fall wildflowers are coming on strong. Goldenrod, narrow-leaved sunflower and *Pityopsis* are everywhere; each with its own shade of gold. Purple mistflower, blue curls, and *Liatris*, or blazing star, are contributing blues and purples to the palette.

One of the most beautiful places to see these stunning displays is in the House Pasture, the open field directly south of the House and Barn, separated by the trail that cuts south near the Barn past the pear tree. If you walk out today, you can immerse yourself in acres of pink *Agalinis*, mixed with swaths of flowering light yellow silver-leaved grass. Directly behind the Barn is a patch of brilliant yellow sunflowers stretching trail to trail. Just the short walk from the house down the trail through the pasture and back will give you a moment full of color and texture and light. You can hear the sound of the bees and the breeze through these tall flowers, smell the scent of freshly mown grass, feel the sun on your face... a sensual and spiritual experience. This is fall at Birdsong.

If you have time to go for a longer walk, explore the entire property. Flowering is occurring everywhere. The Gin House Field has its own huge patches of foxglove and goldenrod and lopsided Indian grass and the Farm Pond is ringed with gold narrow-leaved sunflower and goldenrod – a brilliant sight not to be missed. You can see it from the Star Pasture in the middle of the Gin House Field! It has also been a good year for partridge pea, especially on the east side of the property,

where there are extensive patches scattered in the understory. This is great news for our quail who dearly love the seeds.

The Big Bay Field Work Site The WHIP site (Wildlife Habitat Improvement Program) or Big Bay Field, as we are going to go back to calling it soon, is a very different place from what it was last year. After this summer's tree-cutting that removed the shade-producing shortleaf trees, the sun was able to reach the ground and has released a nice population of blooming *Liatris*, our beloved blazing star. There is more of it here now than anywhere else on the property. It is a favorite of many, with its solitary elegant wand of tiny deep purple flowers, very attractive to butterflies and bees. This extensive bloom is wonderful to see, but is also a mixed blessing because the next phase of the WHIP project is coming up in a couple of weeks. We are obligated to spray herbicide here to eliminate invasive bahia grass, so as pleased as we are to see so much *Liatris*, we are now faced with having to initiate some kind of rescue project before the spraying takes place. We don't want to lose all those plants. By the time you read this we will have had to do something to save them and no doubt notified you by email requesting help.

We are planning to get the spraying done before the end of October. We will be using a strong herbicide, Imazapyr, because it is the only thing that controls our problematic non-native bahia grass. We have researched this extensively, trying to find a way to use as little herbicide as possible at as low a strength as possible that will kill only the problem plants we have. Unfortunately, such an herbicide has not yet been developed, and the best alternative we have found will kill just about everything there. The goal is to prepare a bahia-free field for a February longleaf seedling planting. At this point, the best choice we have is to use Chopper, a version of Imazapyr, and then to give the field three months for the soil-active chemicals to work and then dissipate before our winter planting. We have already ordered 10,500 seedlings, to be hand planted at a density of 605 trees per acre in this 17.4 site in February.

I have given quite a bit of thought to what our founder Betty Komarek would think of this situation we are in. Betty and Ed planted this grass for cattle in the 1940's all over Birdsong, creating the first improved pastures in the area and resulting in good cattle yields. In later years, when it became clear that bahia was impossible to get rid of and prevents natives from thriving, she knew we were going to have difficulties and had regrets about having brought it in. Knowing Betty, she would have worked through the problem the same way we did and finally conclude: we have to do this. It is the only way available at this time to get rid of bahia. We will keep our eyes on the prize: in years to come we will have restored a bahia and weedy blackberry pasture to a thriving longleaf pine woods with beautiful native understory plants and a healthy gopher tortoise community.

Land and Site Management Speaking of invasives, we got a shock about three weeks ago. As you may recall and as you may have seen at Birdsong, we had to do some major repair on the Upper Pond Dam where heavy rains last year had

caused the south edge of the dam to erode badly. We researched this and had a company bring in heavy cement riprap and shore up the dam. That has all worked just fine; when we had that heavy rain back in the summer the new work did its job. However, we just discovered, growing there among the riprap, a thriving little population of *sandspurs* – despised for their painful spiky seed heads that penetrate skin and clothing and dog fur with the slightest of contact. Upon discovering this intrusion, I came close to having a little fit, and proceeded to yank out as many plants as I could find, getting a dozen burrs embedded in my shirt and pants and fingers. Did I mention that they are painful and hard to remove? Sandspurs are one of the last things we need at Birdsong. This tenacious plant came in with the load of dirt and riprap brought to repair the dam. There are other plants in there too that we don't want, so Alan Parker has gone in and pulled every last one he could find and put them in heavy plastic garbage bags destined for burial in a landfill. Now we will have to be extremely vigilant for the next year or more around the entire pond where seeds might float, and be sure to eradicate this plant. We are not happy. We will certainly be keeping this in mind if we ever need material brought in again.

Special Sighting Last Saturday the attendees of Marvin's Fall Birding Walk got a real treat. We had enjoyed a leisurely walk to the Upper Pond, birding along the way, and edged our way quietly to the dam in order to not disturb any visiting ducks. The Farm Pond has been host to a flotilla of twenty-plus Blue-winged Teal off and on for the last month and I was hoping our group might get to see them. We got to the dam and there were no teal, but we were fortunate to see a group of five Wood Ducks, two males and three females, who promptly flushed, calling as they flew. Right at that moment, with our attention south on the Farm Pond, one of our birders looking toward the Upper Pond, said "What is that?" We all rotated north and there by the wildflower hammock was a swirl of activity underwater that raised up the spatterdock lily pads. I was thinking, that size, it has to be a gator. Up came a big sleek dark head, bright eyes, with a very long gold and black speckled fish in its mouth – a really big otter! You could even see the teeth gripping the fish. He or she stared at us for a moment - we were all speechless and amazed - then he turned and plunged back under the lily pads, leaving another swirl behind. Wonderful! We see the evidence of otters with their trails and slides both sides of the dam in that vicinity, but to see one that close and for that long, with a big fish! Best sighting of the day, even if it wasn't a migrant.

The Bird Window For those of you who are on our email list, you are up to date regarding the House and Gardens Improvements project and know that the house is now open again. There remain a few small finishing touches, but the painting is done in the house. The gardening around the house is also continuing and will go on for the rest of the fall. While our painters were here working actively around the outside of the house, they had scaffolding set up in front of

the Bird Window and plastic on the ground capturing paint chips, so we quit feeding the birds, not wanting to interfere with the painting and not wanting to have the birds picking around on the ground and possibly ingesting old paint chips. We also let the pool dry out so it could be cleaned, so no water had been available there for about ten days.

In preparation for re-opening on the 9th of October, we got the mister started and filled the two cleaned pools late on the 8th and started feeding the morning of the 9th. The response was rapid. Within an hour, there were six Gray Catbirds at the Bird Window, all being very friendly, and at one point five of them were sharing the pool and mister! Within another 30 minutes, two Wood Thrushes had appeared, also interested in the mist and second pool, joined shortly by two Swainson's Thrushes. It was fun! Just a little later that day there were four Wood Thrushes, the same six Catbirds in and out, a Red-eyed Vireo and a Scarlet Tanager female. These same birds have stayed around for the week, except there are now fewer Catbirds all at one time. Since we opened on Friday the 9th, we have also seen two first year male Rose-breasted Grosbeaks, more Scarlet Tanager females and young, Tennessee Warblers, Pine Warblers, Hooded Warbler, Yellow-bellied Sapsucker, Indigo Bunting immature male (partly indigo), mature male Indigo, male and female Downy Woodpeckers, Ground Doves, and a Blue-headed Vireo. Regulars include Tufted Titmouse, Chickadees, Cardinals, Jays, Red-bellied Woodpeckers, Mockingbirds and Carolina Wrens.

These birds are all extremely interested in the water and make having a bath look like a party. I can't get over seeing the Wood Thrushes; it has been a long time since we've had them here, and I have certainly never seen four at one time and present over a period of days.

So, the Bird Window is back in business. Hector and Umberto have done some very nice pruning and tidying. We have a beautiful new stump in place for the main raised feeder, thanks to the efforts of Glen Biernum, who cut it for us from a fallen tree out on the place and manhandled it onto his trailer and then into place at the Window. Not an easy task. We are holding off for a while yet on replacing the bamboo trough feeder - we'll make sure that the paint chips along that wall are taken up first.

Please come visit! We could not be happier with how the house and gardens are shaping up, even though it is taking a very long time; the Bird Window has been full of interesting migrants; the Butterfly Garden is still in full flower and gorgeous, attracting a lot of sulfurs, fritillaries and our fall favorite, the zebra longwing; and just a short walk out to the Barn to gaze at the field of flowers will give you a sense of how heavenly fall at Birdsong can be. We look forward to sharing it with you!

-KDB

BIRDSONG NATURE CENTER WISHES TO THANK:

Program Volunteers

Dave Almquist and son Lukas, for leading an excellent insect collecting field experience! Thanks to Justine Almquist for being the photographer and taking some wonderful photos. See them on our Facebook page!
Marvin Collins, for leading the *Fall Birding at Birdsong* walk.
Beth Grant, for *Bringing Nature Home*.

Special Financial Gifts

Mark and Susan Baldino, for a former-employer matching gift, to be matched in part by IBM Corporation.
Rennick Enterprises, Inc.
Jack and Kathleen Weiss
William and Patricia Chisholm and Timothy and Selli Lehman for pledges for the Georgia DNR Youth Birding Competition.

Memorial Gifts

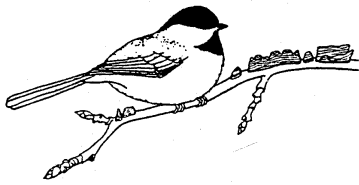
Bill and Cindy Parrish, for a gift in memory of their Birdsong friends Don Hill and Larry Herring.

Special Thanks To:

Very special thanks to Mike Miller, for mowing the Birdsong trails while Chuck was recovering from his knee injury.
Thank you to Galbaby Scott, for Albert’s help with repairing the tractor.
Carolyn Cohen, for donating a wonderful selection of birding guides and bird books, including a 1950 “Audubon’s Birds of America”, by John James Audubon.
Thanks to the Candelarios and Albritton families, for working with Alan Parker on raking the lot and weeding the gravel paths.
We appreciate their contribution to the House and Garden project.
Nancy Ann Thomas, our dedicated Friday Bird Window volunteer, for helping visitors and taking such good care of the birds and the Bird Window and for making suet cakes.
Bob Dunn, for continuing to share his great photo-story of the mother raccoon and three babies that were visiting the Bird Window regularly in July and August.
Karen Thomas, for volunteering at the Bird Window on Wednesdays through August. We wish her well and look forward to her return.
Alan Strowd, for volunteering at the Bird Window every other Saturday. We also offer special thanks for his accounting support.
Alan Parker, for providing site, garden, and land management support.
Myles Black and Bob Bearss, for wrapping up the 2015 Bluebird Trail Monitoring season.
Joe Peresich, for continued improvements to our Facebook page, and for ongoing website and Paypal management.
Tami Tomasello, for being our social media coordinator and managing our Twitter site so expertly.
Butterfly Garden volunteers Donna Legare, Bob Bearss, Beth Grant, Myles Black, Jan Blue, Yvonne Stinson, Laninda Sande, and Connie Lechnar. Special thanks to George McEntire for repairing and improving the garden’s irrigation system – a very nice gift. Thanks to all for the keeping the Butterfly Garden beautiful!

Birdsong Nature Center Board of Directors 2014-2015	
President	Joe Peresich
Secretary	Margie McInnes
Treasurer	Bill Preston
Directors	
Jim Antista	Dale Aldridge
Woody Search	Joe Newborn
Brenda Coy	Jack Weiss

BIRDSONG’S CORPORATE SPONSORS
Hopping, Green & Sams, PA May Nursery Monrovia Growers of Georgia Native Nurseries O’Toole’s Herb Farm Trillium Gardens The Great Bicycle Shop Thomasville Nursery Corporation Service Company Deerwood, LLC Cairo Family Medical Center



Birdsong Nature Center

MEMBERSHIP APPLICATION

Date _____

New Renewal

Credit Card Check Cash Paypal

Credit Card Account #

Exp. Date ____/____/____ Amount Authorized \$ _____ Authorization No. _____

Cardholder Signature _____

Name (Please print clearly) _____

Address _____ City _____ State _____ Zip _____

Phone: Primary (____) _____ Alt (____) _____ EMAIL _____

Place of Employment: _____ Job Title: _____

Training, experience, interests: _____

How did you learn about Birdsong? From a member of Birdsong, the news media, word of mouth, our newsletter, etc?

Please be specific: _____

I would like to join the Friends of Birdsong in the following category:

- Individual Friend \$30 Bird Window and Nature Trails free during open hours.
Two free one-time guest passes.
Member discount on scheduled programs.
10% discount on items at the Chickadee Corner Gift Shop.
Bimonthly newsletter. Reciprocal general admission at
participating nature centers nationwide (call for list).
- Family/Friends \$45 All of the above benefits for each member of the immediate
household. Four free one-time guest passes.
- Friends of the Cardinal \$60 Five free one-time guest passes in addition to above.
- Friends of the Chickadee \$100 Six free one-time guest passes in addition to above.
- Business/Corporate Friend \$100-\$1,000 One free one-time guest pass for each \$10 of membership
(ie., 25 passes for \$250) and recognition in newsletter.
Call for more information.
- Friends of the Hummingbird \$250 Hummingbird feeder in addition to above.
- Friends of the Bluebird \$500 Bluebird nesting box in addition to above.
- Birdsong Naturalist \$1,000 Personal tour of Birdsong with Executive Director and/or Board Chair
for up to 6 people. Call for more information.

I do not wish to receive any (above) benefits with my membership and would like the whole amount tax deductible.

I would like to support Birdsong by volunteering to help as follows:

- | | | |
|---|---|--------------------------------------|
| <input type="checkbox"/> Bird Window Instructor | <input type="checkbox"/> Program Development | <input type="checkbox"/> Other _____ |
| <input type="checkbox"/> Financial/legal guidance | <input type="checkbox"/> Public Relations | _____ |
| <input type="checkbox"/> Fund raising | <input type="checkbox"/> Serve on Board of Directors | _____ |
| <input type="checkbox"/> Greeter | (please submit resume) | _____ |
| <input type="checkbox"/> Gift Shop Assistant | <input type="checkbox"/> Teaching (birds, nature walks, | _____ |
| <input type="checkbox"/> Land Management | stars, etc.) | _____ |

Memberships are renewable one year after the sign-up date. Members can upgrade to a higher category membership by sending the balance within the year. Memberships are deductible in part, depending on the value of goods and services received. Please call for information. Receipts stating the value provided and the deductible amount will be sent to those joining at the \$100 or higher level.

NEW FRIENDS OF BIRDSONG

Tallahassee

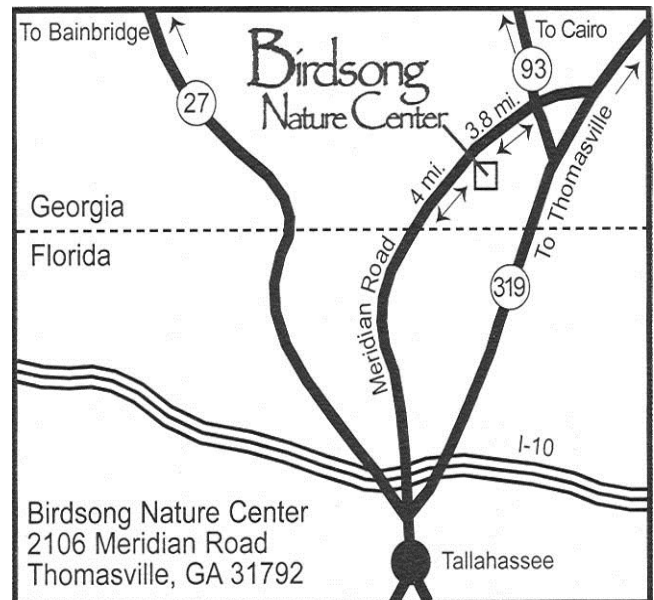
Anne Rokyta
Mary Catherine Register
Michael Scher
Matt McKibban
Maria Moncrief
Sophie Wacongne-Speer

Thomasville

Shari and Jim Hobby

Other Areas:

Velda Johnson	LaPlata, MD
William Henderson	Havana, FL
Peg Thomas	Cairo, GA
Bush Ventures	Miami Beach, FL
Bill Petty	Crawfordville, FL
Jane and Bobby Burt	Lynn Haven, FL



DIRECTIONS:

From Tallahassee: Meridian Road north, 4 miles past FL/ GA border (marked by a blue sign that reads Grady Co.), on right side of road. OR 319 north, turn left onto Rt. 93, then turn left onto Meridian Road, 3.8 miles on left side of road.

From Thomasville: 319 south, turn right at Shell gas station onto Meridian Road, approximately 5 miles from Shell or 3.8 miles from stop sign at Rt. 93, on left side of road.

Watch for small sign that reads "Birdsong".

NON-PROFIT
ORGANIZATION
U.S. POSTAGE
PAID
TALLAHASSEE, FL
Permit No. 660

Birdsong Nature Center
2106 Meridian Road
Thomasville, GA 31792
Address Service Requested